

**PART NUMBER****PFR5-4028****DESCRIPTION**

REAR DIFF REAR MOUNTING BUSH INSERT

INSTALLATION GUIDE**Product description:**

This part fits into voids in the original rubber bush

OE number: 33177852495.

Contents (parts per pack):

1 x Polyurethane A Insert

1 x Polyurethane B Insert

1 x Aluminium Washer

*Please read the complete fitting instructions and check package components before fitment.
These fitting instructions are to be used as a guide and in conjunction with workshop manual.*

It is recommended that:

-all work to be carried out by a licensed technician;

-all safety precautions adhered to;

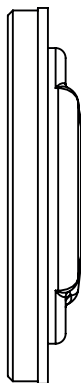
-wheel alignment to be checked and adjusted as required after any suspension work.

All fasteners must be tensioned to manufacturer's torque settings.

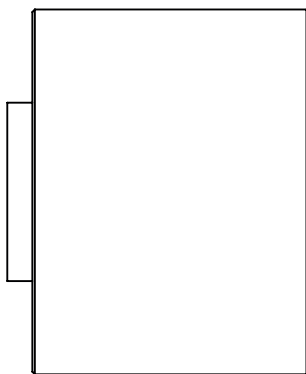
Fitting Instructions:

1. Remove the original bolt from rear diff rear mounting position in the subframe.
2. Fit the new A part polyurethane insert into the bush from the rear of the car.
Fit the new B part polyurethane insert into the bush from the front of the car.
3. Fit the washer into the A bush from the rear of the car.
4. Re-fit the diff to the car and tension all hardware to manufacturers recommended torque settings.

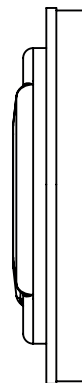
Front of Car



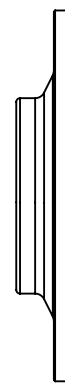
Polyurethane B Insert



Original Bush



Polyurethane A Insert



Washer